



GET FIREWISE



A fire

Ask the students to describe what they can see

- Discuss the words: *fire, wood, smoke, flame, heat, burning*. You may want to use the word *fuel*.

Ask the following questions:

- What is happening in the photograph?
- Is this a safe fire?
- Why is there a guard around the fire/wood burner?
- Who should light this fire?

Additional items to discuss:

- Teacher can discuss the *meter from the heater* rule
- Teacher to demonstrate this action with children



Aarti



Hāngī



GET FIREWISE

2

Types of fire

This card also has an duplicate card to be cut out to use in a sorting activity.

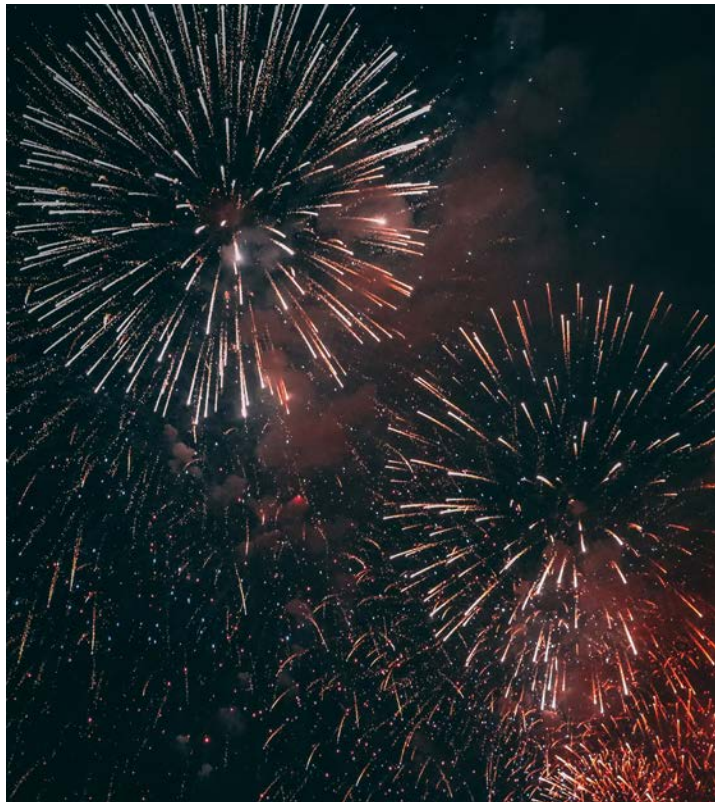
Discuss the fires in the photographs. Focus on the types of fire that your students identify with.

Ask the following questions:

- What do you see?
- Discuss the fire in the photographs.
- What do we use the fire for? (heat, light, cooking, burning rubbish or for a celebration)
- Why do we need to be careful near this fire?
- What can we do to be safe around this fire?

Additional items to discuss:

- Teacher can discuss the *meter from the heater* rule
- Teacher to demonstrate this action with children



Aarti



Hāngī



GET FIREWISE



Cut up the photographs for an activity





Cooking dinner

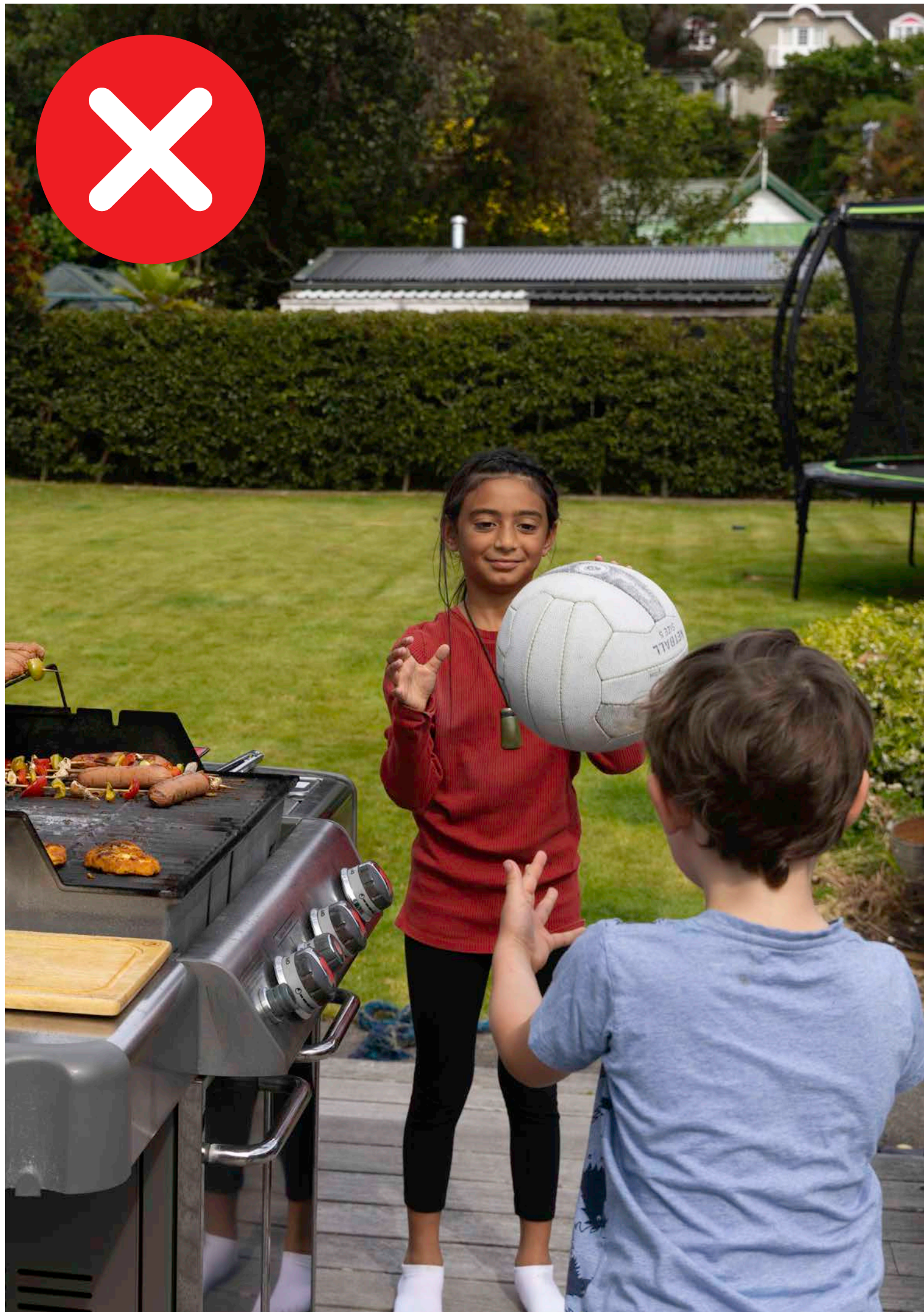
Display the left-hand side of the card while keeping the right-hand side (the safe fire) covered.

Ask the following questions:

- What can you see?
- Where is the heat source?
- What could happen next?
- What should the children do?
- What should an adult do?
- Why does the photograph have the big red cross it?

Display the right-hand side of the card and discuss how:

- Adults always need to watch cooking.
- Children should never play near fires or cooking.
- Adults must always take care when cooking, never leave pan or pot handles sticking out.



4

Cooking on a BBQ

Display the left-hand side of the card while keeping the right-hand side (the safe fire) covered.

Ask the following questions:

- What can you see?
- Where is the fire?
- What could happen next?
- What should the children do?
- What should the adult do?
- Why does the photograph have the big red cross it?

Display the right-hand side of the card and discuss how:

- Adults always need to watch cooking.
- Children should never play near fires or cooking.





The woodburner

Display the top of the card while keeping the bottom (the safe fire) covered.

Ask the following questions:

- What can you see?
- Where is the fire?
- Is this a safe fire?
- What could happen next?
- What should the children do?
- What should adults do?
- Why does the photograph have a big red cross on it?

Display the bottom of the card and discuss how:

- Children should never play near fires or cooking.
- Children should play a safe distance from a heat source.
- The guard prevents the children from playing too close to the fire or falling onto it and getting burned.
- Adults should not put paper, clothes or other objects close to the fire because they might burn.



GET FIREWISE



Children playing with lighters and matches (indoors)

Use this photograph to discuss how dangerous it is to play with lighters and matches.

Ask the following questions:

- What can you see?
- What could happen next?
- Are the children safe?
- What should the girls do now?



GET FIREWISE

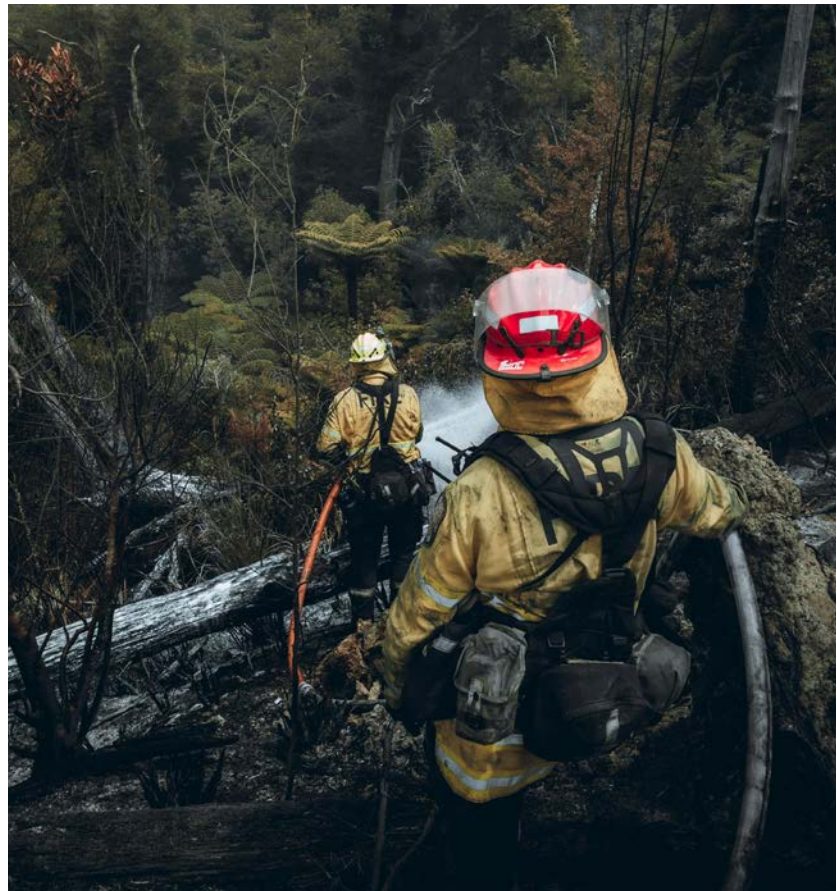


Children playing with lighters and matches (outdoors)

Use this photograph to discuss how dangerous it is to play with lighters and matches.

Ask the following questions:

- What can you see?
- What could happen next?
- Are the children safe?
- What should each of the children do now?



7

Firefighters putting out fire

Use these photographs to discuss the features of the fire truck and what firefighters do to put out the fires.

Ask the following questions:

- Why do the firefighters wear breathing gear?
- Why do the firefighters wear special clothing?
- What would happen if a firefighter went into the burning building without breathing gear and special clothing?
- Where does the water for the hoses come from? (From the tank on the fire truck, but hoses may also get connected to other available sources of water).
- Where would your safe meeting place be at home/school?

Discuss the smoke in the pictures and the heat of fire.

- Focus on the picture where the house is on fire (middle left hand side) and ask your students if they or their family or whānau could go into the house and why not.