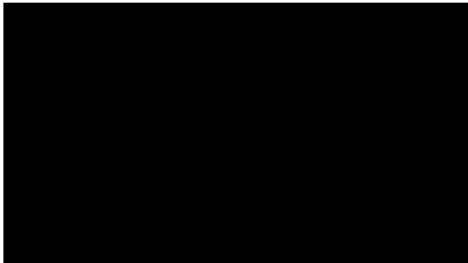




National Headquarters
Level 12
80 The Terrace
PO Box 2133
Wellington
New Zealand

Phone +64 4 496 3600

19 September 2018



Information Request – Central Auckland and Kaipara fire district maps

I refer to your official information request dated 12 September 2018 asking for the above information.

In accordance with the provisions of the Official Information Act 1982, I *enclose* the information you requested.

Note also that this response (with your personal details removed) may be published on the Fire and Emergency website.

Yours sincerely



Bella Sutherland
Director, Office of the Chief Executive

encl



New Zealand Fire Service

Central Auckland Urban Fire District



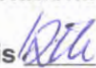
Released under the Official Information Act 1982

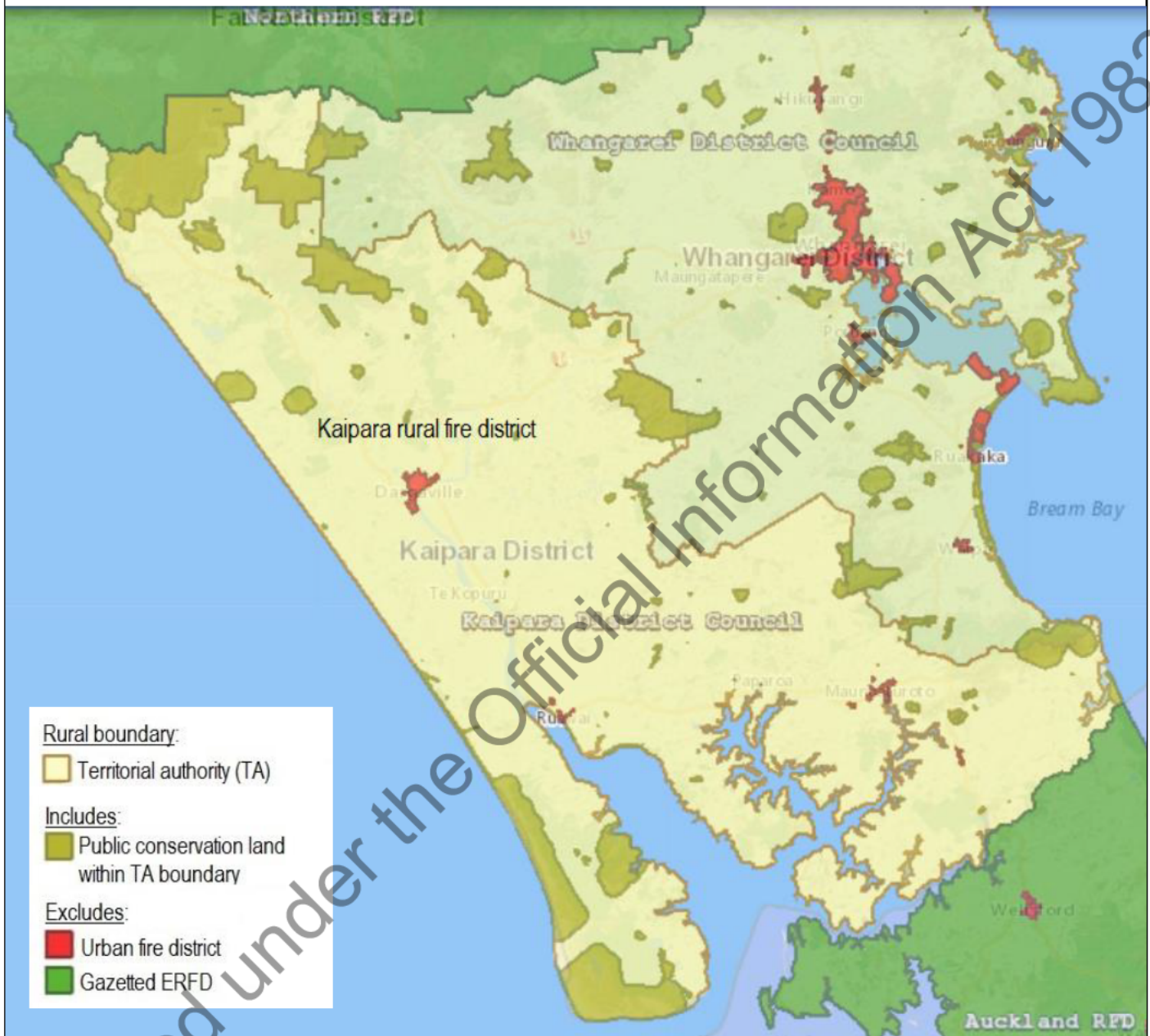
0 2.5 5
kilometres

- Central Auckland Urban Fire District
- Property Boundaries

Plan 1 of 1
Central Auckland Fire District
as delineated on this plan is approved

National Commander

Dated this  day of December 2008



DISCLAIMERS AND ACKNOWLEDGEMENTS

This publication is copyright reserved by Fire and Emergency New Zealand. Information derived from Land Information New Zealand is subject to Crown Copyright. Information derived from other 3rd parties is copyright of the respective provider. Fire and Emergency New Zealand gives no warranty in relation to the data (including accuracy, reliability, completeness or suitability) and accepts no liability (including, without limitation, liability in negligence) for any loss, damage, or costs relating to any use of the data.